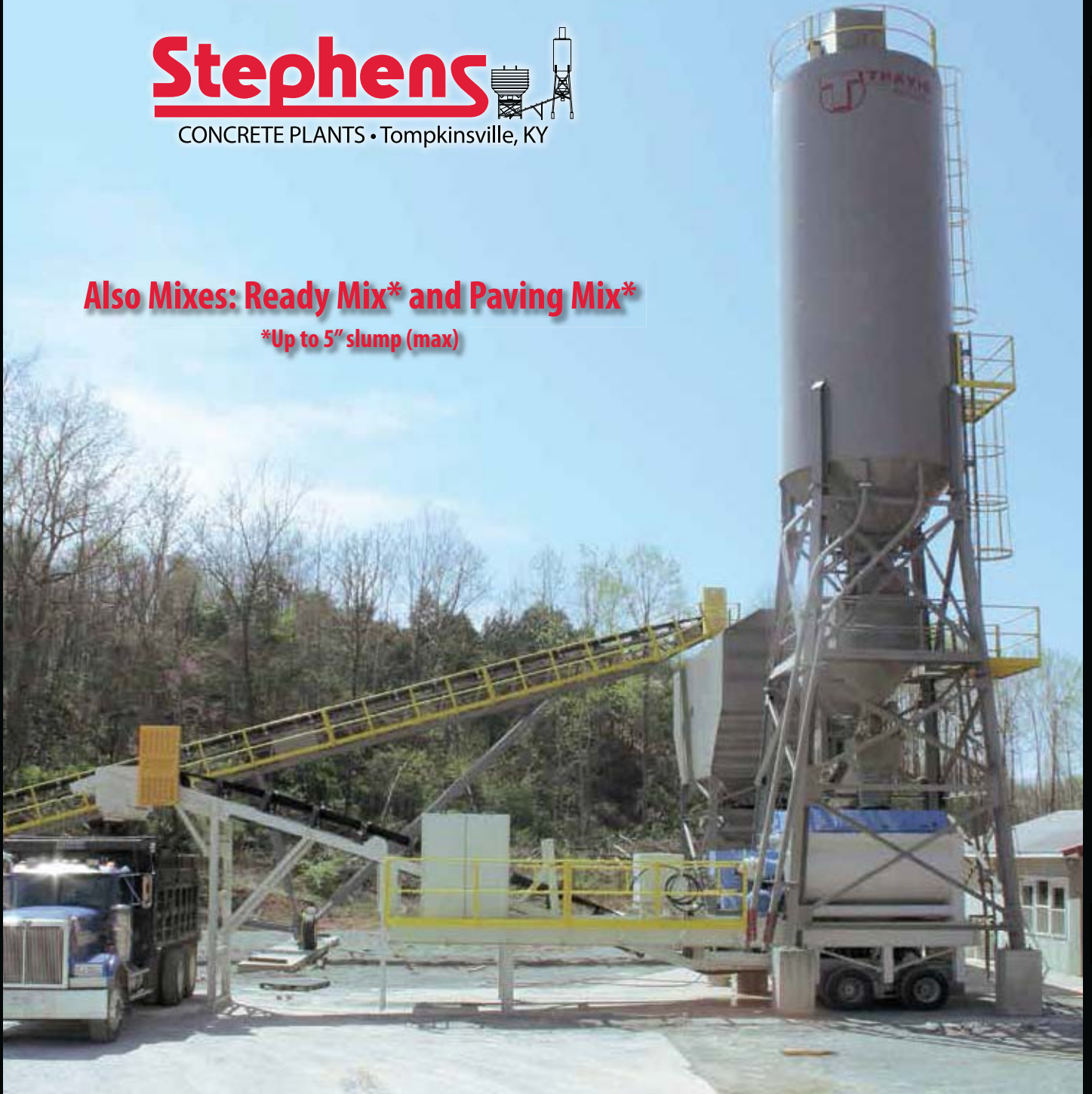


PORTABLE RCC MIXER

Stephens 
CONCRETE PLANTS • Tompkinsville, KY

Also Mixes: Ready Mix* and Paving Mix*

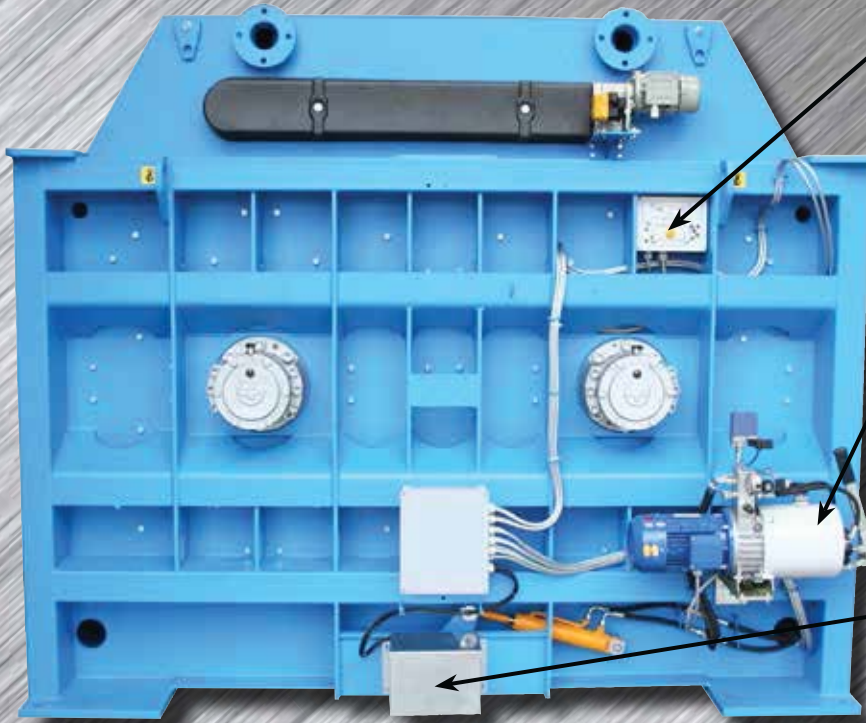
***Up to 5" slump (max)**



MIXER COMPONENTS



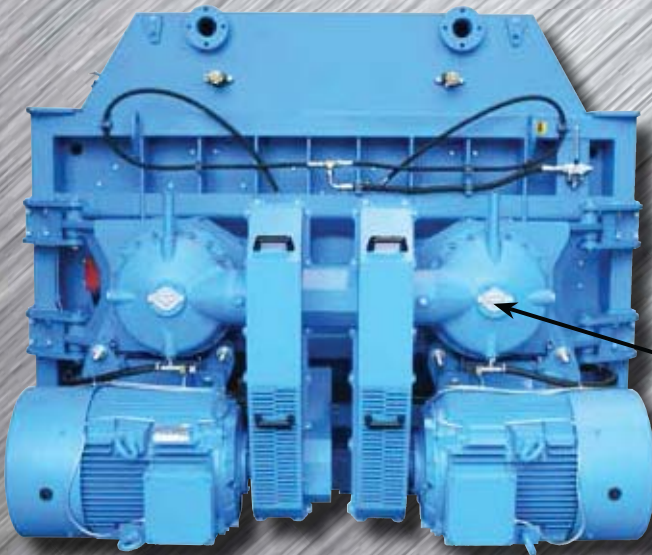
The full width access hatch allows easy access. It includes two inspection ports and a high security positive disconnect lock.



The **Alarm Unit** is standard and warns of faulty shaft seal lubrication, low oil levels and high temperatures in gearboxes and motors.

The **Sicoma Strength** discharge door is hydraulically powered. A manual lever allows the door to be opened if power is lost.

The Sicoma Strength waterproof door does not leak. A Non-rubbing positive closing action with both pressure and position switches, plus an adjustable part-open position and rubber seals give many years of life.

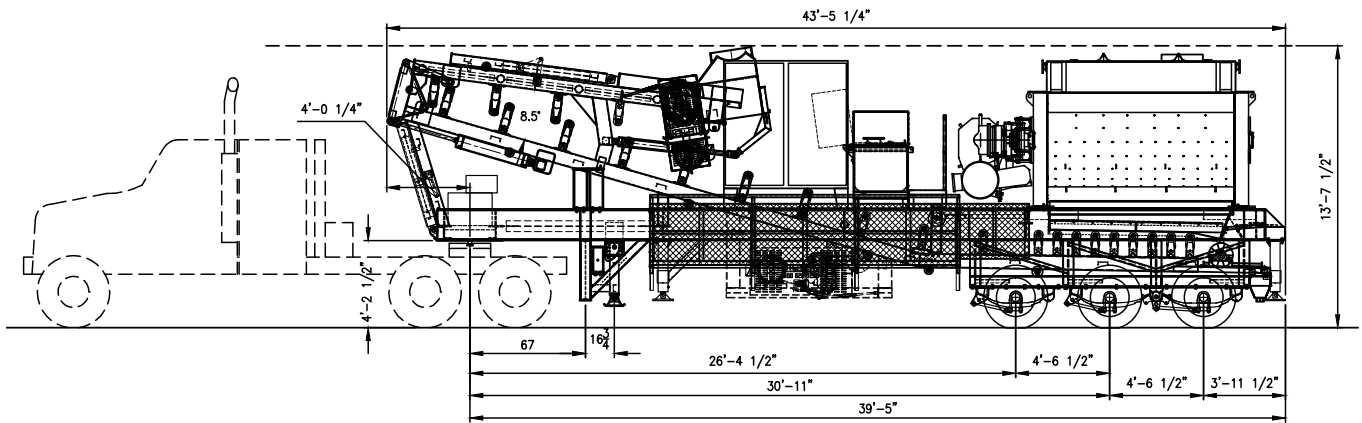


SWING OUT DRIVES:

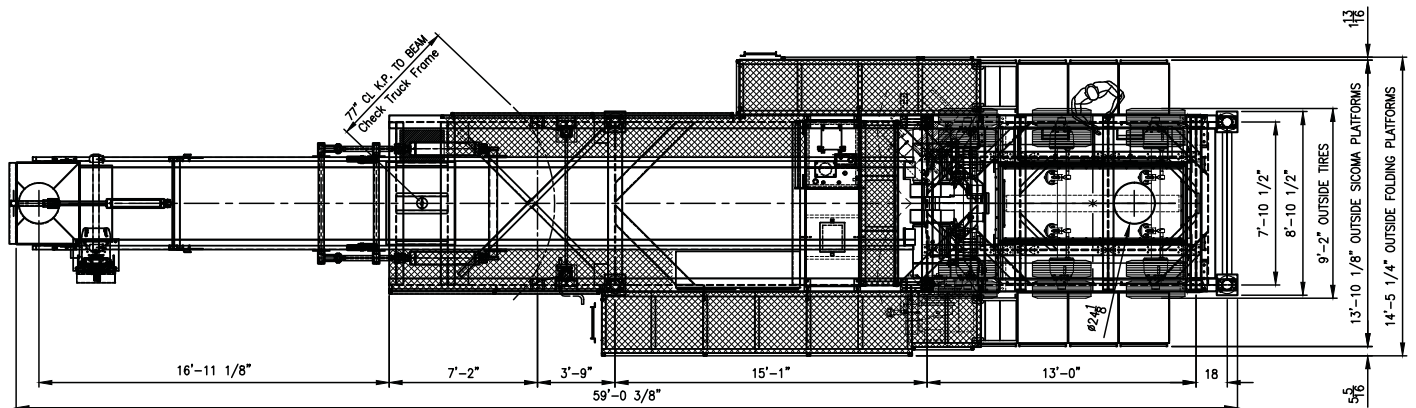
The full drive assembly (motor, pulleys and gearbox) is hinged to the frame of the tank. In case of maintenance to the shaft supports, this system guarantees the fastest accessibility. The downtime is at least one third of any other twin shaft mixer.

SHAFT SEALS:

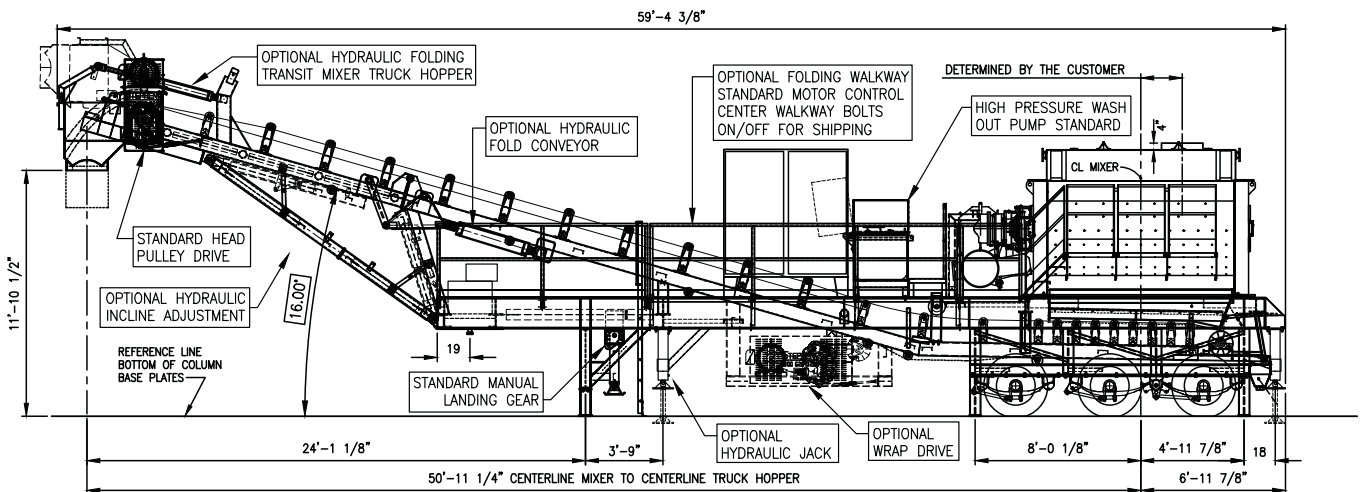
The new shaft seals by SICOMA are mechanical seals based on the rotation of two high precision top hardness rings.



SHIPPING VIEW: RCC MIXER ON TRAILER & CONVEYOR FOLDED OVER



PLAN VIEW: RCC MIXER & CONVEYOR IN OPERATION POSITION



SIDE VIEW: PORTABLE RCC MIXER SYSTEM WITH 42" BELT X 54'-0" LONG CONVEYOR

PLANT CLEARANCE OF 13'6" (MIN.) REQUIRED

PORTABLE RCC MIXER



Optional: Wrap drive assembly mounted under conveyor near electrical panel.

Standard: Head Pulley Drive Assembly
Includes :
Stephens guard for 50 HP motor and dodge reducer.

42" transfer for conveyor: 50 HP motor
dodge reducer, 3 ply belting, 5" idlers, hold
down idlers and vulcanized splice.

Standard: Truck Collection Hopper for loading ready-mix trucks, can easily be removed to load dump trucks.
Optional: Hydraulic raise and lower of Hopper.

Optional: Platforms up conveyor and around head pulley.

Standard: Includes hinged support mounted to frame of trailer.
Optional: Change conveyor elevation hydraulically.



Optional: Hydraulic raise and lower of hopper.

Hydraulic Options:
Gas Power Pack , Leveling Jacks, Conveyor Fold/Unfold
Electric Power Pack:
Leveling Jacks, Conveyor Fold/Unfold, Hopper Fold, Conveyor Elevation Controls



Optional: Change conveyor elevation hydraulically.

Our motor control center is complete with starters and controls for the conveyors and Sicoma mixer. Equipment is also pre-wired to starters in liquid tight metallic flex conduit.



INSIDE

3rd party UL and CSA Approved

Sicoma twin shaft mixer MAO-6,000 with automatic high-pressure washout system. Optional sizes available.

ELECTRICAL PANEL



Heavy duty frame. Designed for twin shaft or continuous mixers. Shown with Sicoma MAO-6000 twin shaft mixer. Includes three (3) 20,000 lb. single axle transportation systems, with air brakes, turning signals and 5th wheel.

Bolt on removable expanded metal work platform for access to motor, control center pumps and mixer.

TOWABLE POSITION



The Sicoma Strength extra-rigid frame holds the mixer shape and maintains shaft alignment during heavy mixing. This helps to prevent damage and keep you up and running year after year.

The Sicoma Strength design concentrates the compulsory mixing action in the center of the mixer, giving a more homogenous mix in faster times. It also uses up to 15% less cement — a huge savings for most applications.

A one day shaft replacement — Sicoma understands that if you are not mixing concrete, you are not producing. We have designed our shafts to be able to be changed in one day (if you ever need to), saving you time and money.

The standard **High Pressure Washout** eliminates most of the clean up. The powerful pump and twin oscillating spray bars create powerful jets of water in the mixer. These jets and a hand gun makes cleaning tough corners easy.



MODEL MAO	6000	7500	9000	12000
Yield compacted concrete, cu. yd./cu.m. ^{1.}	5.3/4.0	6.6/5	8/6	10.5/8
Time per cycle (loading included) seconds ^{2.}	90	90	90	90
Compacted concrete per hour, cu. yd./cu.m. ^{2.}	213/160	267/204	330/244	427/320
Mixing motors and power, HP / kw	2x100/75	2x125/90	4x75/55	4x100/75
Hydraulic power pack motor, HP/kw	3/2.2	3/2.2	10/7.5	10/7.5
Mixing shaft speed, rpm (varies between)	24-27	24-27	24-27	24-27
Number of mixing arms	24	24	32	40
Maximum aggregate size, inches / mm	7/180	7/180	7/180	7/180
Weight of empty mixer (without skip), lb / kg	26,240/11900	26450/12000	31200/14200	43200/19600

1. Maximum 150 lb/FT

2. Cycle time and capacity rate may vary based on mix designs.





Stephens

CONCRETE PLANTS • Tompkinsville, KY

12000 Model



12000 model with optional air seals & compressor

 **Stephens**
Stephens Manufacturing

NOTE: All technical data subject to change without notice due to technical improvements.

Proud Members of:

